

**Friday 14<sup>th</sup> February**

Dear Parents/Carers

Happy Valentine's Day! We have been very busy again during Spring term 1 and we would love to share with you what we have been doing.

In this newsletter:

- School growth
- Class updates
- Uniform & Reminders
- A message from Mrs Austin
- Dates for your diary

### **School Growth**

Next half term, we will be opening Class 9 and be welcoming 5 new students to Easthorpe on their transitions straight after the holidays. We will also be welcoming Mrs Bradley (pictured below). We know, as always, that our current pupils will make them all feel very welcome. Mrs Bell is creating a Social Story to share with the pupils in Class 9 too which will be available soon.



We will also be adding to our staff with new TAs- Mr Sully, Miss Robinson & Mr Ade.

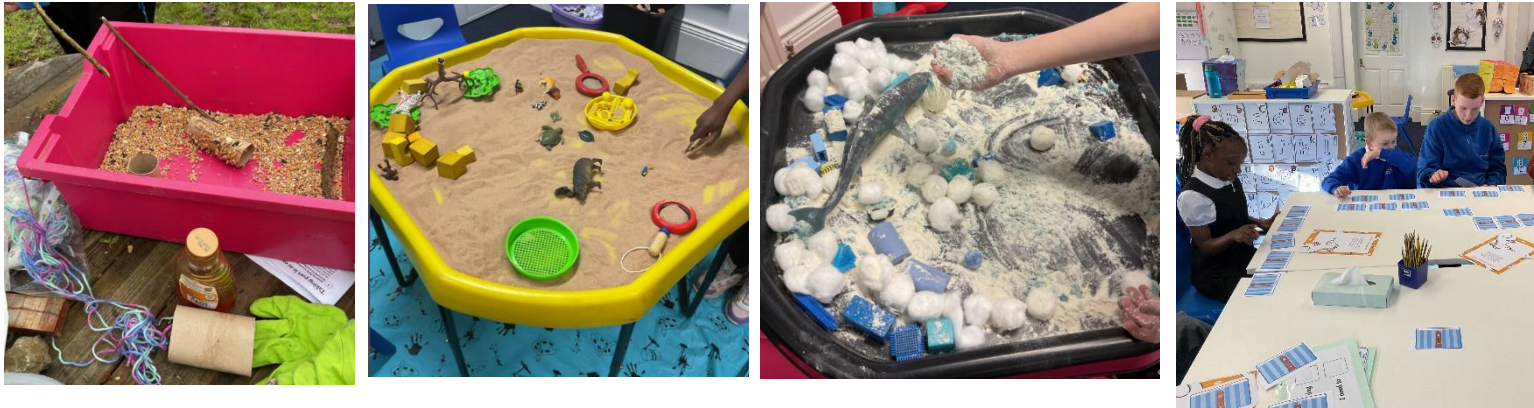
### **Class updates**

#### **Holly Class**

Holly class have worked extremely hard this term, they should be very proud of themselves as all the adults are! They have created beautiful poems in English and enjoyed playing silly soup to embed our rhyming learning. We have had lots of hands-on activities in maths and geography with making our own clocks to tell the time and getting messy in the tuff trays learning about hot



and cold climates and the animals that live there. We celebrated Chinese New Year with some food tasting and during bird watch week we made bird feeders to hand around school.



### Redwood Class



Redwood have been learning about coding and applying their understanding to programme robots to complete circuits around the classroom. We problem solved well to correct and adapt our code to get the mouse to the end of the track.



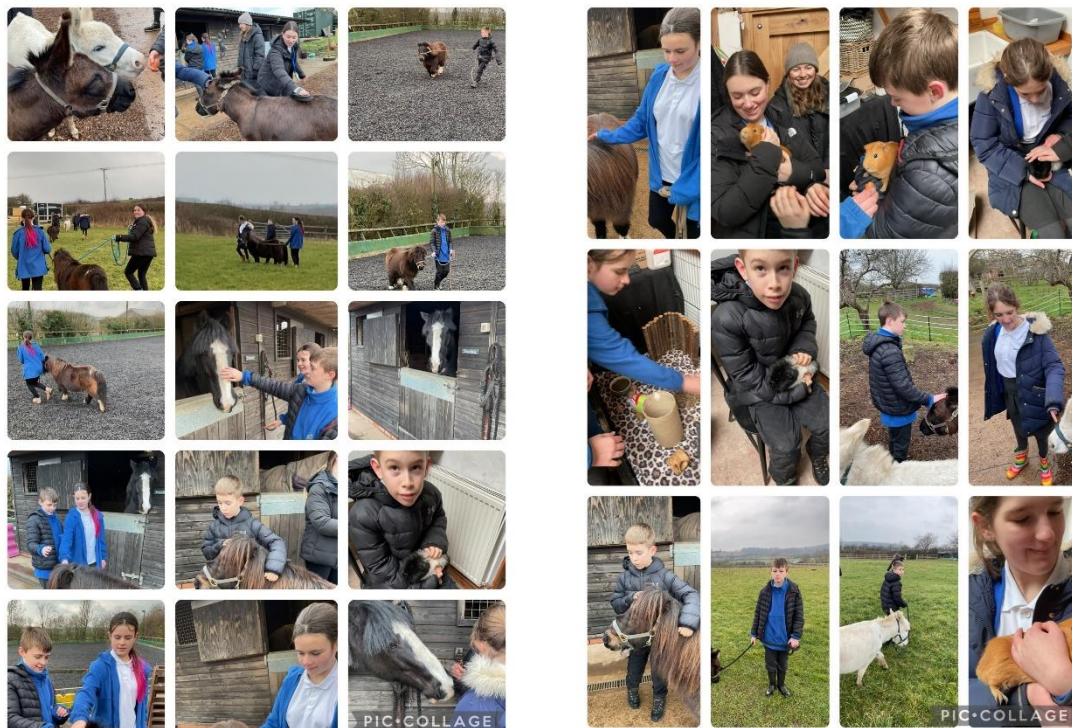
## Hawthorn Class

The children have researched, designed and made 3 course meals this half-term. During Maths, we have been telling the time and learning how to use different methods to work out our times tables and to solve problems. In English, we have been exploring different types of poetry and applying our understanding to write our own.



## Beech Class

Beech class had the opportunity to visit one of our learners farm this week. We met the horses, donkeys and pony, we helped to groom and feed them fed them and walked the pony and donkeys around the field. The children also held and fed the guinea pigs.



# Willow Class

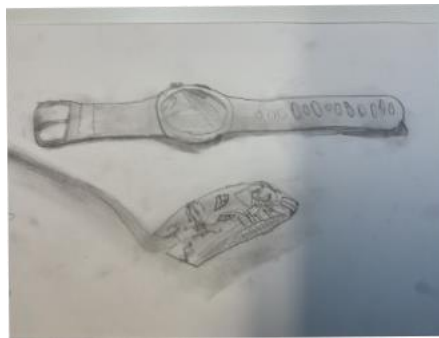


Willow Class have made three course meals this term. Here are some photos of them cooking their curries, which were delicious! We have been learning to tell the time on analogue and digital clocks and have been creating visual masterpieces during Art Week.



## Oak Class

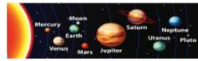
Oak Class have been working hard learning about different types of poetry. We have learnt about haikus, kenning poems, limericks and repeating pattern poems. We have written our own poems in different styles. In maths we have learnt about telling the time and measuring angles. We have also been learning about The Great Plague, and we have found out interesting information about some of the countries in Europe. We have been swimming this half term. Everyone has worked hard and improved their technique and stamina. In art, we have worked on shading techniques and have produced some fantastic sketches using shading to show tone and texture.



## Silver Birch Class



Students from Silver Birch thoroughly enjoyed a well-deserved reward trip for their hard work writing different types of poetry such as acrostic and Haiku poems. Fresh air, climbing frames and ice cream was just what we all needed. Here is an example of their fantastic work:



**R**oaring through the sky

**O**ver many seas

**C**ircling the planet

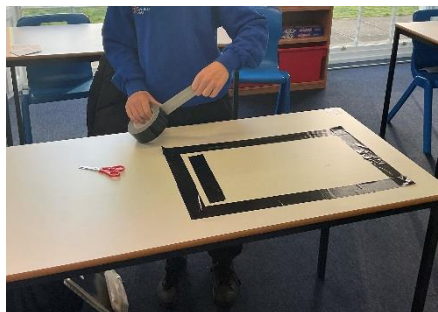
**K**epler B-86 not too far away

**E**jecting the thrusters

**T**o search for alien life



## Lime Class



Lime Class have enjoyed spending time outside when the January sunshine peeks through! We have been developing our team building skills and social skills by enjoying playing our favourite card games Uno and P For Pizza. We have taken a walk to Ruddington Park and look forward to visiting Nottingham next half term. Students have worked hard in all lessons, especially when participating in Art Week.



## Uniform & reminders

Just a reminder to everyone please can you ensure that for PE lessons, your child has a royal blue PE t-shirt, appropriate bottoms & suitable footwear in school at all times. PE t-shirts are available from the school office.

As we are now offering all pupils Forest School, they need to have appropriate clothes to wear in all weather conditions (e.g. waterproof shoes, coat and warm clothing) and these will need to stay in school.

All pupils should have a coat appropriate for that season in school too.

Please also remember to ensure that snacks that are brought into school help us to continue to promote eating a healthy well-balanced diet.

## A message from Mrs Austin:

As we reach the end of another busy half term, I want to take a moment to thank you all for your continued support, dedication, and commitment to our school community. To our wonderful children—your hard work, enthusiasm, and resilience never go unnoticed. You should all be proud of what you have achieved this half term. Keep striving to do your best! To our parents and carers—your support plays such a vital role in everything we do, and we truly appreciate the partnership we have in nurturing and guiding your children. Being part of the **Easthorpe family** is something special, and I feel incredibly grateful for the kindness, effort, and teamwork that makes our school such a fantastic place to learn and grow. Wishing you all a **restful, safe, and enjoyable half term**. We look forward to welcoming you back refreshed and ready for the next exciting chapter!

## Dates for your diary: Spring term 2

First day of ½ term: Monday 24<sup>th</sup> March

Last day of term- Friday 4<sup>th</sup> April

Half-Term Holiday- Monday 7<sup>th</sup> April– Friday 18<sup>th</sup> April

INSET day: Monday 10<sup>th</sup> March





Thank you for a wonderful half-term We are very much looking forward to the rest of the year and making more fantastic memories with the children.

Yours faithfully,

**Laura Austin**  
**Head teacher**

[laura.austin@easthorpeschool.co.uk](mailto:laura.austin@easthorpeschool.co.uk)

[www.easthorpeschool.co.uk](http://www.easthorpeschool.co.uk)

Easthorpe School, 165 Loughborough Rd, Ruddington, NG11 6LQ

